

**SAMSON CREE NATION – MATRIX SOLUTIONS INC.
PARTNERSHIP**

ABORIGINAL CONSTRUCTION MONITORING

WEEKLY REPORT

SPREAD 2

SEPTEMBER 26TH - SEPTEMBER 29TH

1. PURPOSE OF THIS REPORT

The report is a weekly summary of the daily reports submitted by the Aboriginal Monitors that are working on spread two. The social and cultural findings have been tabulated with locations and mitigation measures below. A summary of the construction activities has been summarized for September 26th – September 29th 2018.

Social and Cultural Features

Field Observation	# of occurrences	Description and Mitigation Measures	Mitigation Status	Further Action Required (Yes/No)
Traditional Use Area (hunting, fishing, gathering, trapping)	N/A			
Rock Formations (rocks of significance, tipi rings, etc.)	N/A			
Artifacts	N/A			
Bones	N/A			
Potential Gravesites	N/A			

Environmental Features

Field Observation	# of occurrences	Description and Mitigation Measures	Mitigation Status	Further Action Required (Yes/No)
Medicinal or Cultural Plants	N/A			
Aquatic Life	N/A			
Animal Observations or Burrows	N/A			
Bird Nests	N/A			
Trees (Red Willow)	N/A			

Wetlands	Yes			
Watercourse Crossing	N/A			

Additional Observations and Summary of Activities or Concerns

Attended daily safety meetings and discussed daily scopes each morning with the Contractor Liaison Dean Pooyak, and/or the Senior Construction monitor Drayton Kasokeo.

Weekly activities included spot-checking km 144-146,148,149,165,173-175,221,223, 232,236,241,242,249,253,259; and shoofly, 89-93, 96,103,132,135,137,141,142,148, 149,151,154,155, 158,161,163,164.

On September 26, the daily safety theme was to be aware of changing work conditions. The weather forecast was windy and overcast. The lower in crew was prepping side booms at SF 89, and the coating crew was prepping welds at SF 90. Mainline welding was monitored at SF 92, and excavator was digging for tie in at SF 91. The coating crew were working at SF 93, and pipes were being prepped for coating. At SF 97, the excavator was cleaning up watercourse dams. At SF 141, crews were lifting the access road for the stinging trucks in the low area of the access road. At SF 149, topsoil was being stripped. At SF 158, dozer and excavator were completing soil stripping for the access approach. At SF 163, crews were waiting for EI to evaluate the depth of the topsoil so it can be stripped. At SF 164, crews were setting up goal posts for the overhead Sasktel Line.

September 27, the daily safety theme was to keep focused on the task at hand. The weather forecast was partly sunny. At SF 89, ditching was observed and excavator was being cleaned at the wash station. Four excavators were digging out 13 joint sections for 8degree side bend. Lower in crew were prepping side boom with cradles for lowering in. Maintenance of ditching wheel was taking place at km 144+900. At SF 90, terra wood was on the ground at the spill pile and ditching wheel was noted. Excavator was digging bore pit for tie in at km 146+100. At SF 132, excavator was digging the disconnect bore bay, and crews were setting up the track bore. At SF 135, crews were pulling in bore section into place under the road, and the crew was backfilling parts of the bore bay. At SF 127, excavators were digging in bore bays. At SF 149, the excavator was stripping topsoil. At SF 151 (Historical spill site), crews were digging contaminated soil and loading it into end dump semi trailers. The crews were digging the mainline on the east side of SF 151.

September 28, the daily safety theme was a review of a near miss incident. The weather forecast was sunny. At SF 89, tie-in crew were digging out the end pipe from Spread 1, and crews were digging out the plug that was left behind from the ditching crew. At SF 90, the area was congested. The ditcher wheel was digging the mainline ditch at km 146+700, and the crew had two excavators digging. At SF 91, the crew was digging on the west side of the Enbridge Valve site. The coating crew were working between SF 91 and 92. At SF 103, poor boy was welding offsets on the mainline. The track bore was working at km 175+200; crews completed the bore and were backfilling the bore bay. At SF 137, the boring crew were working on the Native Prairie. At SF 141, Joshua met with Archaeologist to discuss revisiting the area when hoes are not swinging in the work area. At SF 151, track hoe was loading dirt onto semi-trailers. At SF 155, grading on the ROW was observed. AT SF 158, dozer and excavator were building access ramps and equipment was being washed. At SF 164, excavators and

dozers were stripping topsoil, and hydrovac exposed 36" existing line. They were day lighting the clipper line.

September 29, the safety was fatigue management, be sure to get proper sleep. The weather forecast was cloudy. At SF 90, an excavator was digging the bell hole at the end of a section of mainline to be lowered in. The long stick excavator was cleaning out rocks before lowering in begins. The coating crew were working at km 145+450. The backfill crew were backfilling the mainline ditch between SF 89 and 90. They were working behind the lowering in crew. The wheel ditcher was ditching the mainline at km 148+600. The hydro mulch crew was spraying the spill side of ditch for separation on soil. At SF 92, excavator was digging the ditch. At SF 141, spill piles and equipment were scanned, but nothing was found. Crews were cleaning equipment at SF 142 and 149. At SF 148, Medcor services were on location. The dozer was moving dirt at SF 154.

The location of these features was documented and photos were collected (see below). No additional cultural or environmental features were observed within the scanned areas.

Photos of Sites Visited & Topics Discussed This Week



Mainline welding – SF 92 – Sept 26, 2018



Excavator pulling dams out of watercourse – SF 97 –Sept 26, 2018



Access approach being constructed – SF 158 – Sept 26, 2018



Building access road for stinging trucks– SF 141 – Sept 26, 2018



Terra wood sprayed at spill pile – Km144+900 – Sept 27, 2018



Crews unloading terra wood – km 145+950 – Sept 27, 2018



Loading trailer with contaminated soil – Sept 27, 2018



Topsoil being stripped – km 234+100 – Sept 27, 2018



Tie-in plug being dug out – Sept 27, 2018



Wheel ditcher spudded and ditching on ROW –km 146+700– Sept 27, 2018



Excavator and dozer stripping topsoil – km 253+300 - Sep 28, 2018



Excavators digging bore pit (Native Prairie) – SF 141 – Sept 28, 2018



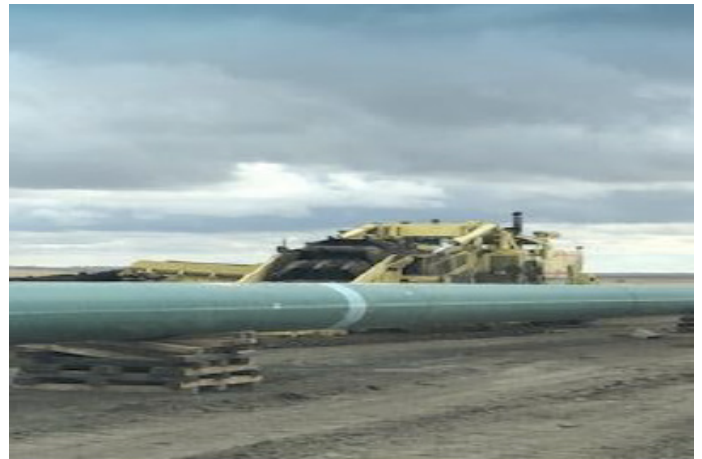
Equipment moving dirt – km 259+150 – Sept 28, 2018



Digging bore pit on Heritage site – km 221+910 – Sept 28, 2018

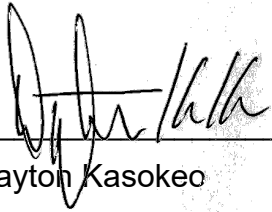


Excavator and swamper shading pipe - km 145+150 – Sept 28, 2018



Ditching wheel working east – km 149+000 – Sept 28, 2018

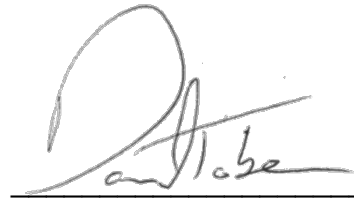
APPROVALS



Drayton Kasokeo
Senior Construction Monitor

October 3, 2018

Date



Daniel Tober
Senior Environmental Scientist

October 3, 2018

Date